



Round Square: Week 2

Vidya Devi Jindal School, Hisar

How we Began... 😊😊😊

- Interactive sessions with our teachers took place on the platform of MS Teams.
- Our teachers guided us about each and every thing in this week of Climate Action.
- With their support and guidance, when we completed all the 3 goals, we had one more interactive session in which we enthusiastically shared our experiences.
- Everything went just fine as we proceed...

Happy Moments... 😊😊



Week 2: Goal 1

- Task 1

- Plant a Tree and share beautiful photos and videos with the name of the plant.
- Aim: to make the students to their bit in saving the environment by afforestation.

- Task 2

- Share beautiful photos and videos of your vertical garden, terrace garden, indoor plants, etc. with some captions related to Saving Earth.

Yashika Gupta
6th B
9630

Planting Palm

NEEM TREE

Araucaria Norfolk
(Andes pine) plant

man's need, but not every man's idea.

Efforts of the students

Task 1
And 😊
Task 2

Goal 2

Task 1

- We had to jot down the effects of climate change in Asia on Plants & Animals.



Task 2

- We had to jot down the effects of climate change in Asia on Weather Patterns & Human Activity.



Efforts of the students

October 10, 2020
Saturday

Climate Change
Project
Week 2
Sppt 2

Q. How do the effects of climate change in Asia on plants & animals? Use photos, video & personal experience to prove your findings.

Effects of climate change in Asia on plants & animals are-

- 1) On Animal - As temperature rising, some animal are dying, some animal are migrating earlier and some animal are waking up from hibernation earlier like bear.
- 2) On Plants - As earth is warming a lot, plants take more time to grow and consume water, drying the soil. As temperature is rising, some plants are dying for lack of water.





October 8, 2020

Round Group Action Project
Week - 2
Sppt - 2

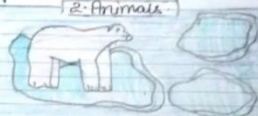
Q. The effects of climate change in Asia on plants and animals? Use photo, video and personal experience to prove your findings.

Ans: The effects of climate change in Asia on plants and animals are: As temperature get warmer, many plants are starting to grow and bloom earlier in the spring and survive longer into the fall. As well, animals are waking from hibernation sooner or migrating at different times. Animals experience hibernation less due to increased greenhouse emissions.

1. Plants



2. Animals





*1 is representing plants
*2 is representing animals.

Work Card

Q. How do the effects of climate change on human and weather patterns are as follows:-

Human as human activities human health has always been influenced by climate and weather change in earth and its variability particularly change in weather are closely related to the environment that provide us with clean air, food, water, shelter, and energy. Climate change, together with other natural and human made global stresses human health and well being in numerous ways. Climate has also affected the human activities such as farming etc.

Weather pattern - using global average temperature is associated with water cycle change in weather pattern, according to science indicate that warmer weather leads to more evaporation, which means more water vapor in the atmosphere. This leads to more clouds, which can result in more rain or snow. In some cases, warmer weather can also lead to more frequent and intense storms, such as hurricanes and typhoons.

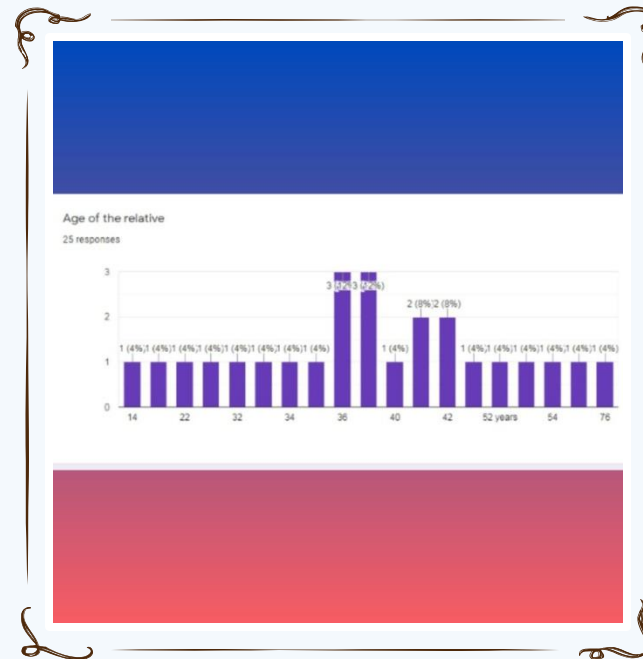
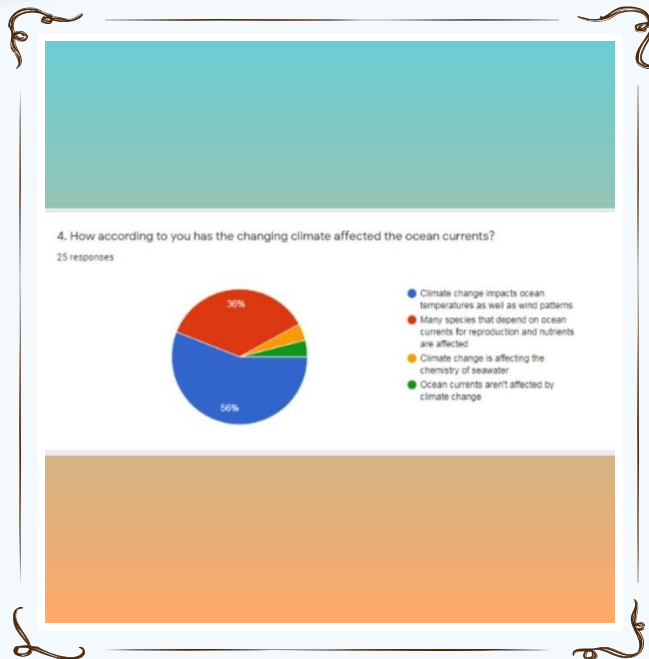
GOAL 2

Goal 3

This was the most interesting goal 😊

This time we had to prepare questions to interview the people of different generations about their opinions on climate change. So, we preferred to take live interviews and we also used the sources of Video calls and Google forms.

Efforts of the students



THROUGH GOOGLE FORMS

Efforts of the students



VIDEO CONFERENCING WITH DR.
GARIMA KUMARI (SCIENTIST IN INDIAN
COUNCIL OF AGRICULTURAL
RESEARCH) BY ADVIKA PRIYADARSHI



Climate is changing

EFFECTS OF CLIMATE CHANGE

RISE IN SEA LEVEL



Melting ice sheets → *Sea level rise*

Animals losing their habitat



Rainfall patterns are shifting and causing floods.

HEAVY RAINFALL ACROSS THE GLOBE



DECLINE IN CROP PRODUCTIVITY



EXTREME DROUGHT

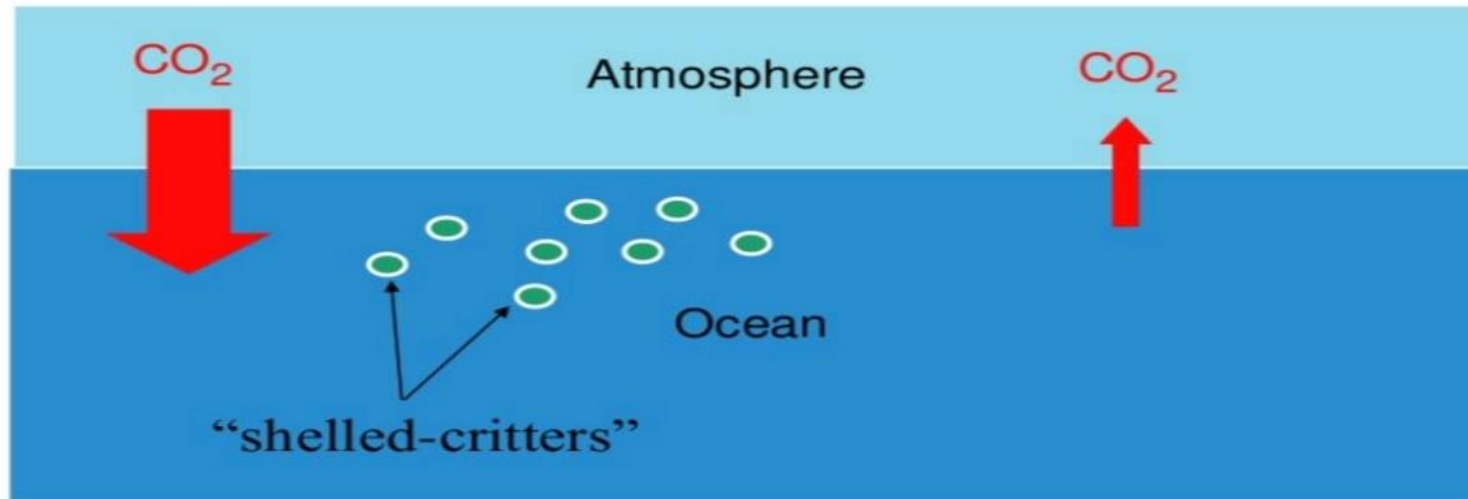


Soil fertility declined



Ocean acidification

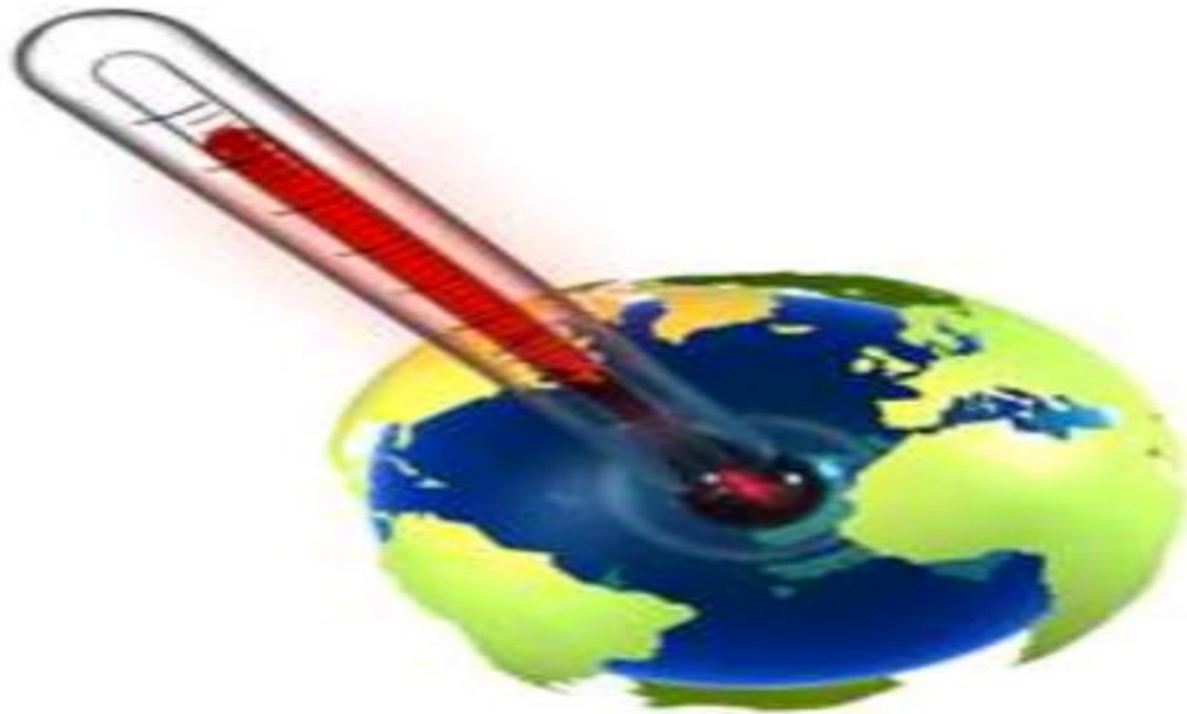
CARBON DIOXIDE ACIDIFIES SEAWATER



- CO₂ and carbonate (which plankton use to make shells) combine in the ocean.
- The ocean is already more acidic than it was 50 years ago.

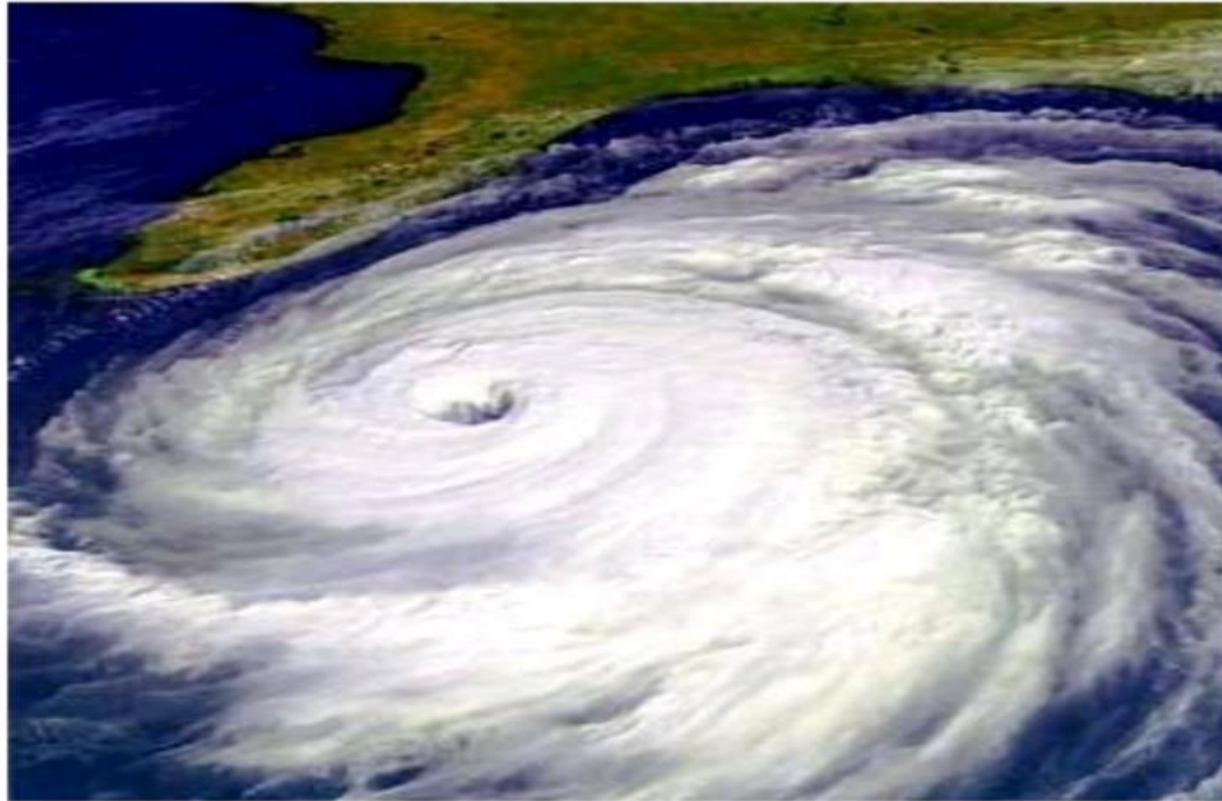
Global temperature rises

RISE IN TEMPERATURE



Extreme climate events are happening.

HURRICANES



ECOSYSTEMS ARE CHANGING



Air getting polluted



Rivers are getting polluted.



WE THE STUDENTS OF VIDYA DEVI JINDAL SCHOOL , HISAR HAVE TAKEN A PLEDGE NOT TO BURN FIRECRACKERS ON DIWALI (THIS YEAR) AND INSTEAD OF GIFTING SWEETS AND EATABLES TO OUR RELATIVES AND FRIENDS, WE'LL TRY TO GIFT A SMALL PLANT OR A SAPLING. WE WILL ALSO TRY OUR LEVEL BEST TO SPREAD AWARENESS AMONG PEOPLE TO DO THE SAME.



Work together and make a difference





Thanks for Watching !!



BY TEHZEEB
DALAL